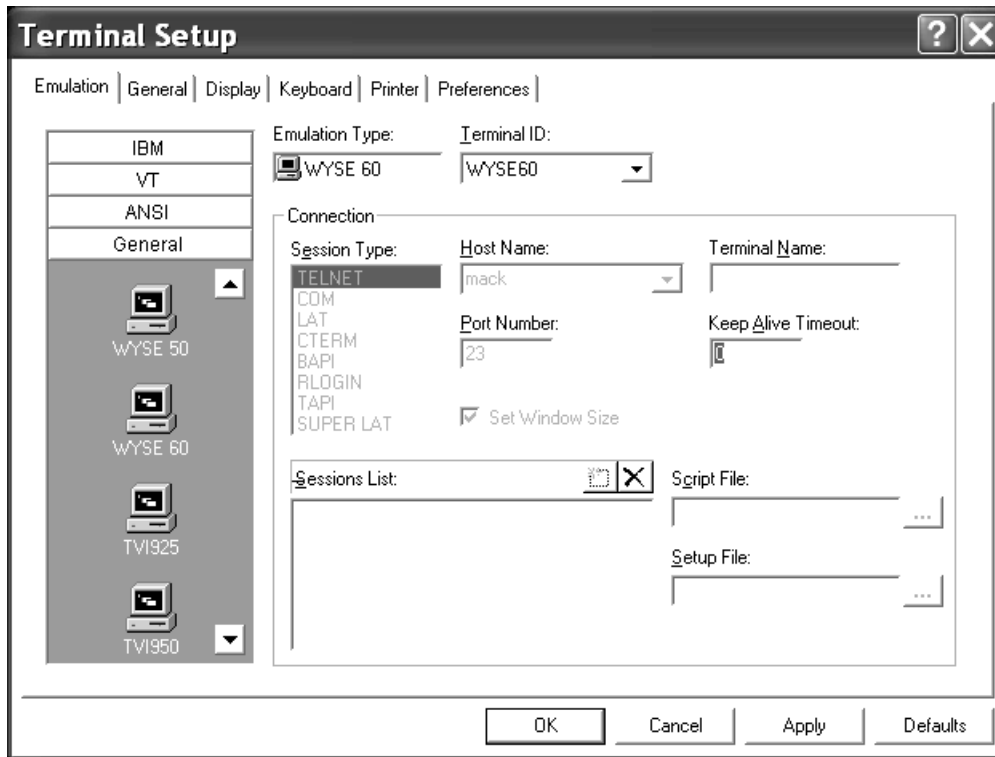
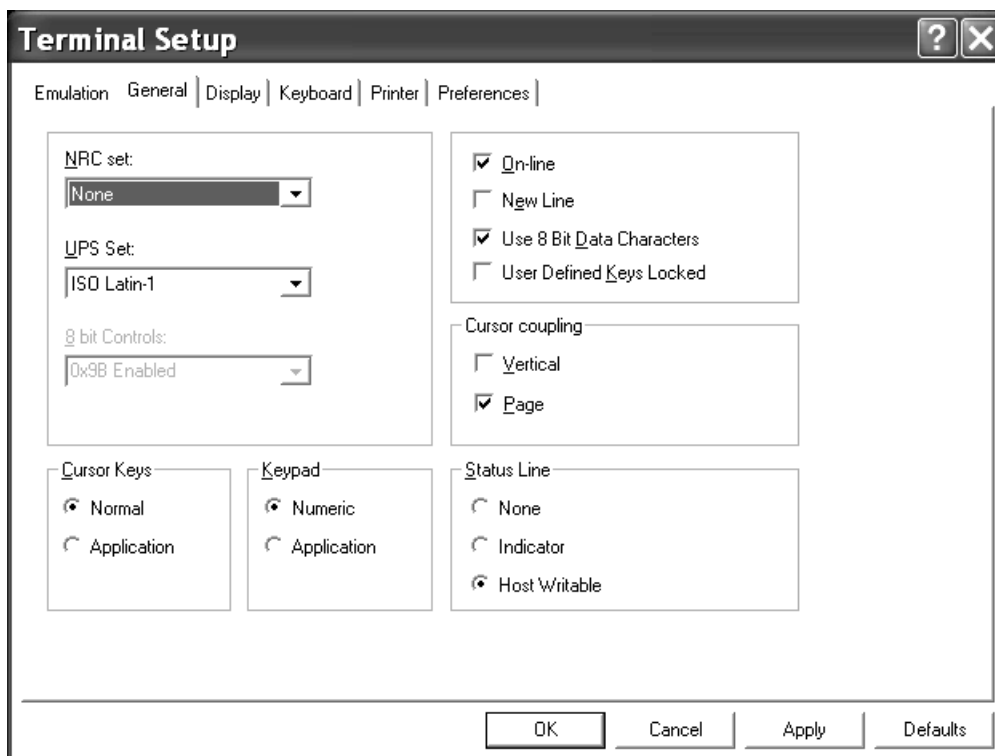


CSC Net SETUP - Use ToolBar's wrench/screwdriver icon – displays icon as "setup"

EMULATION TAB



GENERAL TAB



DISPLAY TAB

Terminal Setup [?] [X]

Emulation | General | **Display** | Keyboard | Printer | Preferences

General

Unscaled Screen

History Scroll Bar

Reverse Display Colors

Autowrap Characters

Dimensions

Columns: 80

Lines Per Screen: 25

Scrolling

Jump Scroll Speed: 4

Jump Smooth

Cursor

Block

Underline

Ins Change

Blink

Visible

Blink Rate: 5 (1/10 Sec.)

Cursor Ruler

No Ruler

Crosshair

Horizontal

Vertical

Power GUI

Power GUI

Show Frame

Button Attributes:

Blink Underline

Reverse Bold

Edit Attributes:

Blink Underline

Reverse Bold

Enable Soft Fonts

Ctrl Characters

Interpret

Display

OK Cancel Apply Defaults

KEYBOARD TAB

Terminal Setup [?] [X]

Emulation | General | Display | **Keyboard** | Printer | Preferences

Backspace Key Sends

Delete

Backspace

Auto Repeat

Key Click

Warning Bell

Margin Bell

Numpad Decimal Sends Comma

Use Emulator Alt Keys

Local Echo

Use VT Keyboard Mode

Answerback Message: 908004

Auto Answerback

Clear Conceal

OK Cancel Apply Defaults

PRINTER TAB

Terminal Setup [?] [X]

Emulation | General | Display | Keyboard | **Printer** | Preferences

Output Type
Print Manager

Use Form Feed CR->CRLF
 Print Line Graphics as Text

Device
Device Name: /pt1

Data Conversion Type
Print Screen: Graphics
Slave Printer: None

File Creation
 Append
 Overwrite

Slave Printer Job Delimiter: None
Delay for Print Closing (Seconds): 0

Advanced Printing...

OK Cancel Apply Defaults

PREFERENCES TAB

Terminal Setup [?] [X]

Emulation | General | Display | Keyboard | Printer | **Preferences**

On PowerTerm Start
 Auto Connect
 Show Connect Dialog Box
 Do not Connect

Window Title
[]

History Buffer Size: 200K

Copy To Clipboard In RTF Format

On PowerTerm Exit
 Save Terminal Setup
Confirm Save: Yes No
 Save Window Size & Position
 Confirm Disconnect Session
Inactivity Timeout (Minutes): 0

On Session Exit
 Auto Reconnect
 Auto Exit PowerTerm

OK Cancel Apply Defaults